



step/Monostable & call Reset Relay

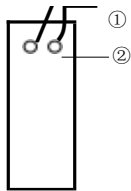
Contact Configuration
Universal Power Supply
2 LED Status Indicators
SPDT or DPDT

Rated Current 5A or 16A
Only 17.5 mm Wide
DIN Rail Mountable
CE RoHS Compliant

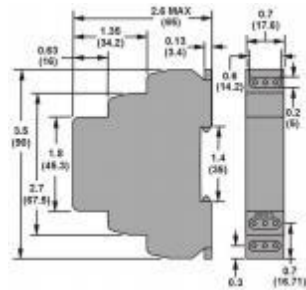
MODEL & EXPLANATION

- YX2M116□ YX2110□
- YX2M210□ YX2210□
- YX2M310□ YX2220□
- YX2010□ YX2221□
- YX2020□ YX2222□
- YX2223□

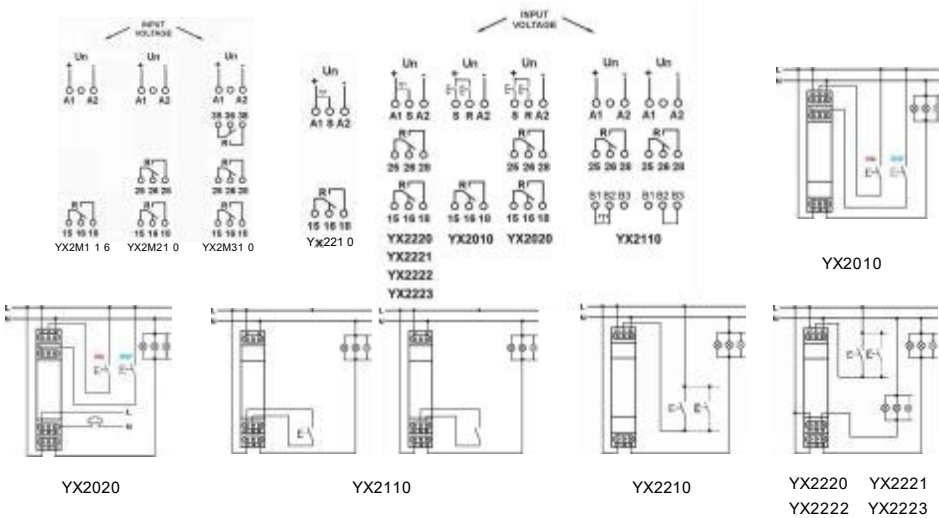
- ① Power Indicator
- 2 Work Indicator



DIMENSIONS INCHES(MILLIMETERS)



WIRING DIAGRAMS

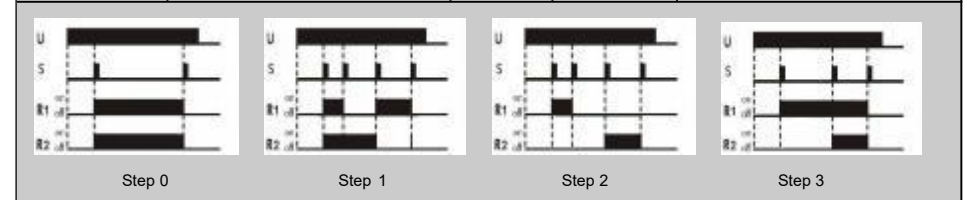


step/Monostable & call Reset Relay

Contact Configuration
Universal Power Supply
2 LED Status Indicators
SPDT or DPDT

Rated Current 5A or 16A
Only 17.5 mm Wide
DIN Rail Mountable
CE RoHS Compliant

Type	Spec	Description	Functions
YX2M116□	1P 16A AC240V	Relay Module (Monostable Relay)	
YX2M210□	2P 10A AC240V		
YX2M310□	3P 10A AC240V		
YX2010□	SPDT 5A / 16A AC240V	Call / Reset Relay	
YX2020□	DPDT 5A / 16A AC240V		
YX2110□	SPDT 5A / 16A AC240V	Step/Monostable Relay	
YX2210□	DPDT 5A / 16A AC240V	Step	
YX2220□		Step 0	
YX2221□		Step 1	
YX2222□		Step 2	
YX2223□		Step 3	



□ : Operating voltage:
220: AC220V D24: DC24V A24: AC24V H00: AC/DC12-240V More...